

Shabtai Jumah
Agriculture Institute Ltd.

Moshav Revaha 79353 Israel

Tel: 972-8-6600846, Fax: 972-8-6812246



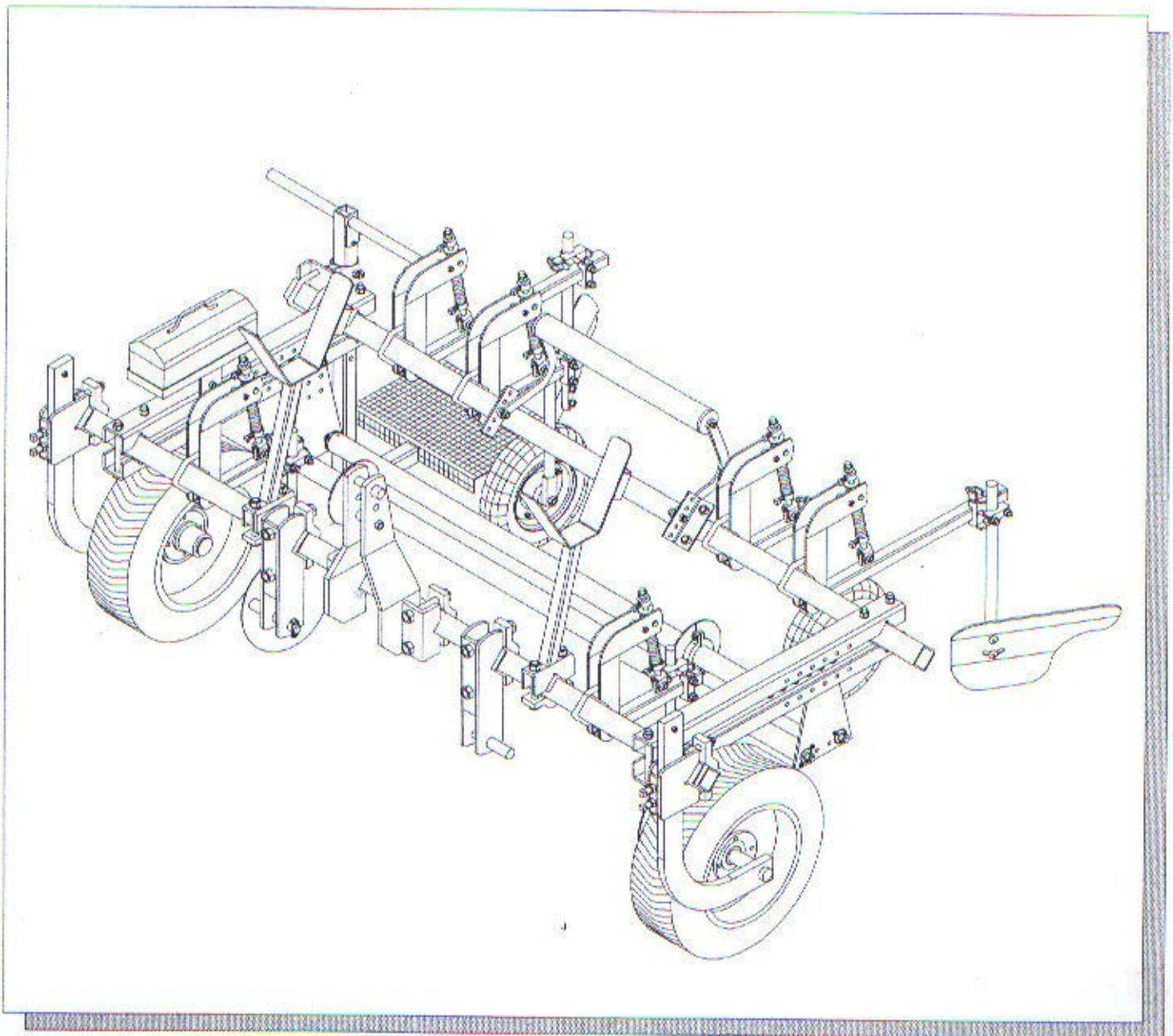
שבטאי ג'ומעה
מיכון חקלאי בע"מ

מושב רווחה משק 53, מיקוד 79353
טל: 08-6600846, פקס: 08-6812246

PLASTIC MULCH UNIT

PLASTIC MULCH UNIT GROUND SHEET MODEL

Cat. No: 690-00-000
Part No: 800-34-3250



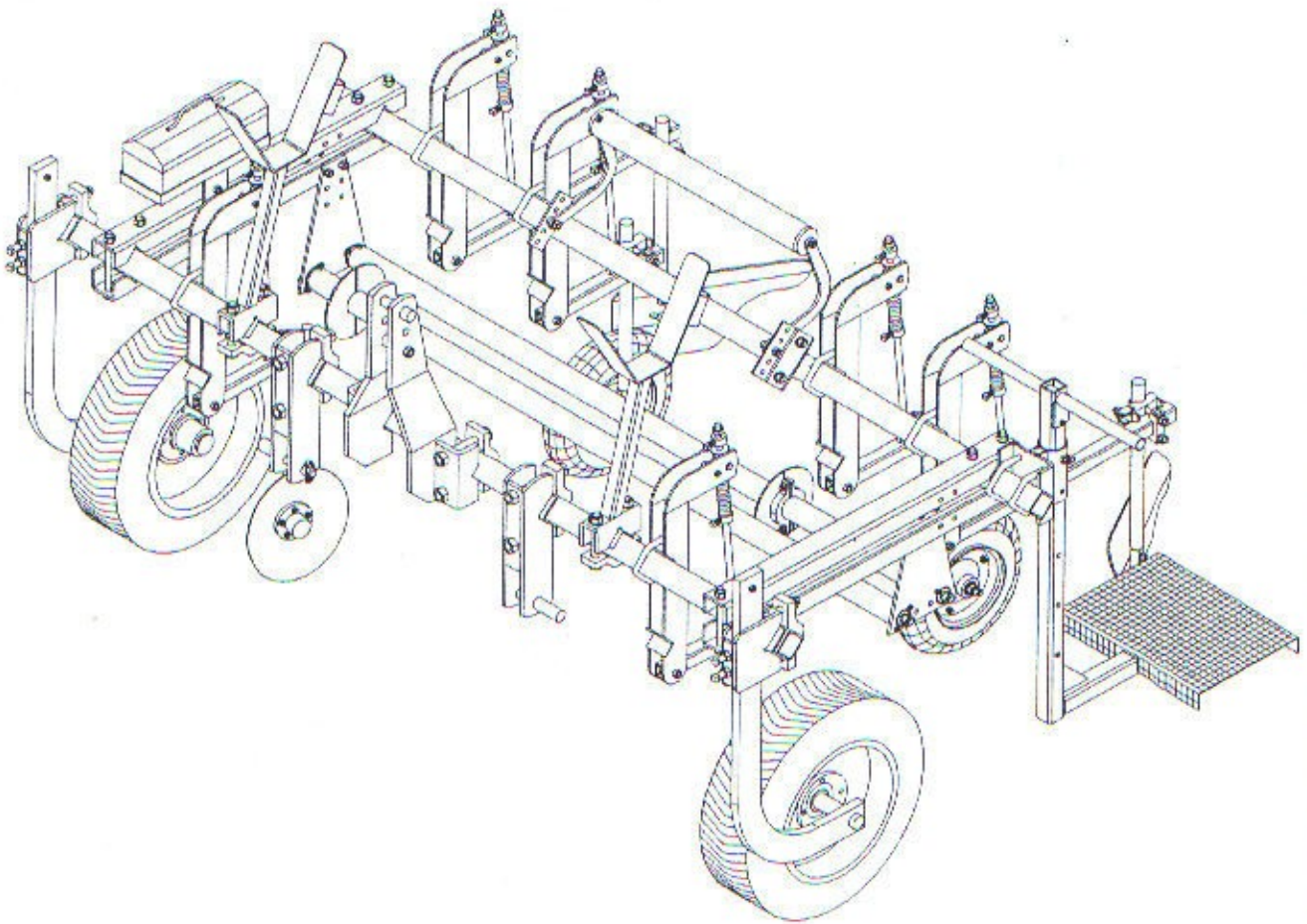
**PLASTIC MULCH UNIT
GROUND SHEET MODEL
COMPLETE**

Cat No: 690-00-000
Part No: 800-34-3250

Description	Cat.No.	Part No.	No. Req.
2800x65x65 Tool Bar		236-22-1236	2
Three Point Hitch	116-01-200	700-34-0320	1
Secondary Bar Spacer, Complete	690-01-100	700-44-3100	2
Upper Roller, Complete	690-02-100	700-44-3121	1
Lower Roller, Complete (Optional)	690-02-200	700-44-3122	1
Compaction Wheel, Short, Complete	690-05-100	700-44-3151	1
Plastic Covering Shovel Short, R.H. Complete	690-06-100	700-44-3161	1
Plastic Covering Shovel Short, L.H. Complete	690-06-200	700-44-3162	1
Disc Bracket, Short, Complete	690-07-100	700-44-3171	1
Rear Stand	690-08-100	700-44-3181	1
Spare Roller Mount, Complete	690-09-100	700-44-3191	2
Tool Box Carrier, Complete	690-10-100	700-44-3192	1
Gauge Wheel Bracket for 2 1/2"x2 1/2" Tool Bar	020-20-046	700-34-0820	2
Gauge Wheel, Short, R.H. Complete	020-20-014	700-34-0809	1
Gauge Wheel, Short, L.H. Complete	020-20-015	700-34-0811	1
Counter Weight for Plastic Roller	690-12-100	700-44-3199	1

PLASTIC MULCH UNIT MINI TUNNEL MODEL

Cat. No: 690-00-100
Part No: 800-34-3260



**PLASTIC MULCH UNIT
MINI TUNNEL MODEL
COMPLETE**

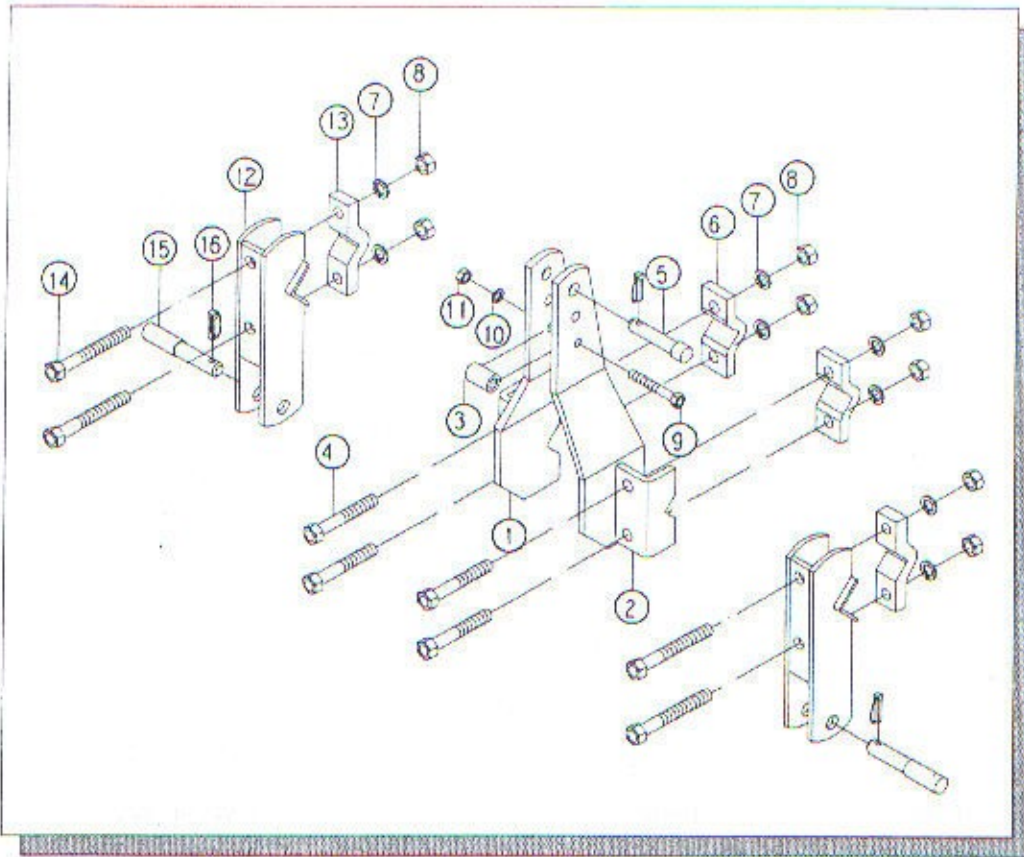
Cat No: 690-00-100
Part No: 800-34-3260

Description	Cat.No.	Part No.	No. Req.
2800x65x65 Tool Bar		236-22-1236	2
Three Point Hitch	116-01-200	700-34-0320	1
Secondary Bar Spacer, Complete	690-01-100	700-44-3100	2
Upper Roller, Complete	690-02-100	700-44-3121	1
Compaction Wheel, Long, Complete	690-05-300	700-44-3153	1
Plastic Covering Shovel Long, R.H. Complete	690-06-300	700-44-3163	1
Plastic Covering Shovel Long, L.H. Complete	690-06-400	700-44-3164	1
Disc Bracket, Long, Complete	690-07-200	700-44-3172	1
Rear Stand	690-08-100	700-44-3181	1
Spare Roller Mount, Complete	690-09-100	700-44-3191	2
Tool Box Carrier, Complete	690-10-100	700-44-3192	1
Gauge Wheel Bracket for 2 1/2"x2 1/2" Tool Bar	020-20-046	700-34-0820	2
Gauge Wheel, Short, R.H. Complete	690-11-100	700-44-3195	1
Gauge Wheel, Short, L.H. Complete	690-11-200	700-44-3196	1
Counter Weight for Plastic Roller	690-12-100	700-44-3199	1

THREE POINT HITCH

Cat No: 116-01-200

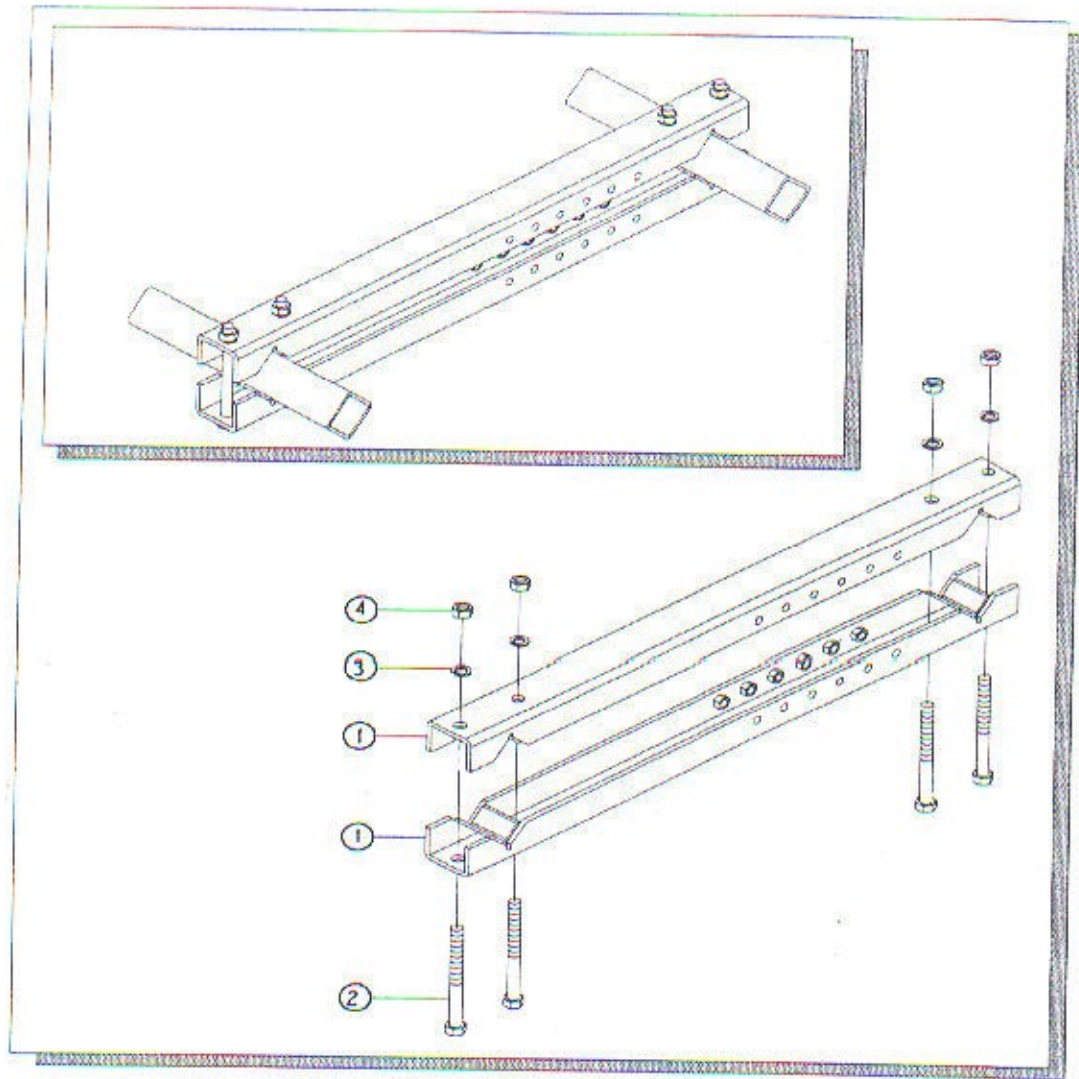
Part No: 700-34-0320



Ref. No.	Description	Cat.No.	Part No.	No. Req.
1.	Mast R.H.	116-01-101	600-34-0313	1
2.	Mast L.H.	116-01-102	600-34-0316	1
3.	Spacer	116-01-103	600-34-0319	1
4.	7/8"x138(5 1/2") Capscrew NC		251-22-1106	4
5.	Upper Pin	116-01-105	600-34-0322	1
6.	Clamp	116-02-102	600-34-0328	4
7.	7/8" Lockwasher		251-22-1062	8
8.	7/8" Hex Nut NC		251-22-1068	8
9.	5/8"x112(4 1/2") Capscrew NC		251-22-0954	1
10.	5/8" Lockwasher		251-22-0894	1
11.	5/8" Hex Nut NC		251-22-0904	1
12.	Hitch	020-08-005	500-33-1505	2
13.	Clamp	020-03-067	500-33-1040	2
14.	7/8"x171(6 3/4") Capscrew NC		251-22-1110	4
15.	Lower Pin	001-50-041	500-33-0041	2
16.	Click Pin 12x50		290-22-0417	3

SECONDARY BAR SPACER, COMPLETE

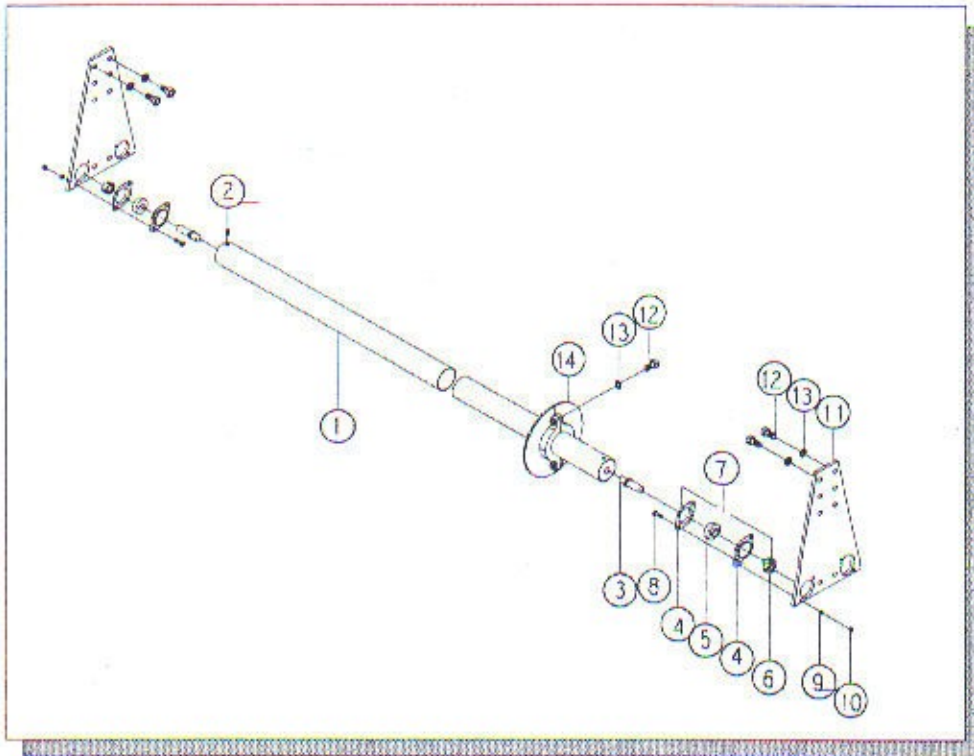
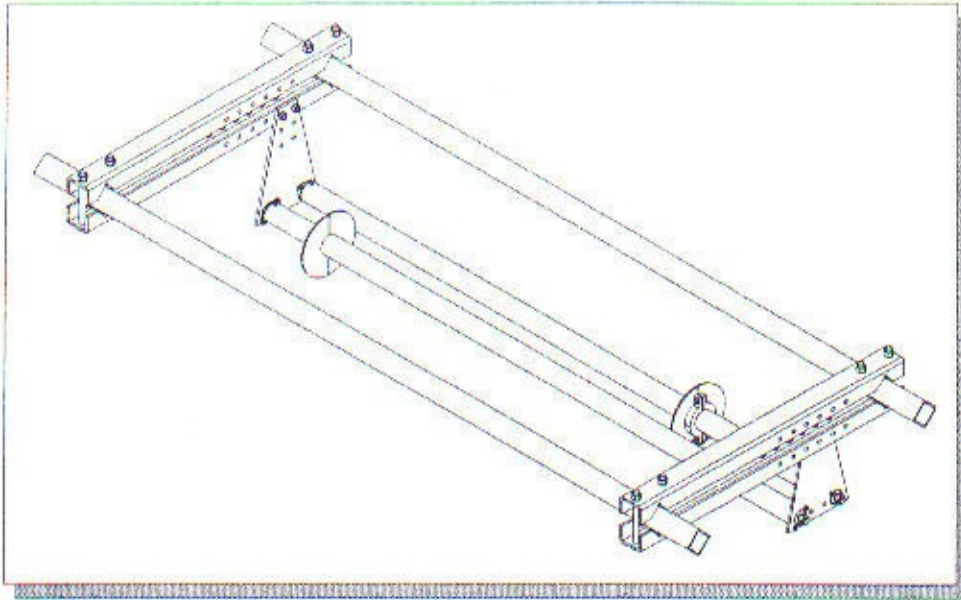
Cat No: 690-01-100
Part No: 700-44-3100



Ref. No.	Description	Cat.No.	Part No.	No. Req.
1.	Secondary Bar Spacer	690-01-101	600-44-3501	2
2.	5/8"x165(6 1/2") Capscrew NC		251-22-0960	4
3.	5/8" Lockwasher		251-22-0894	4
4.	5/8" Hex Nut NC		251-22-0904	4

UPPER ROLLER, COMPLETE

Cat No: 690-02-100
Part No: 700-44-3121



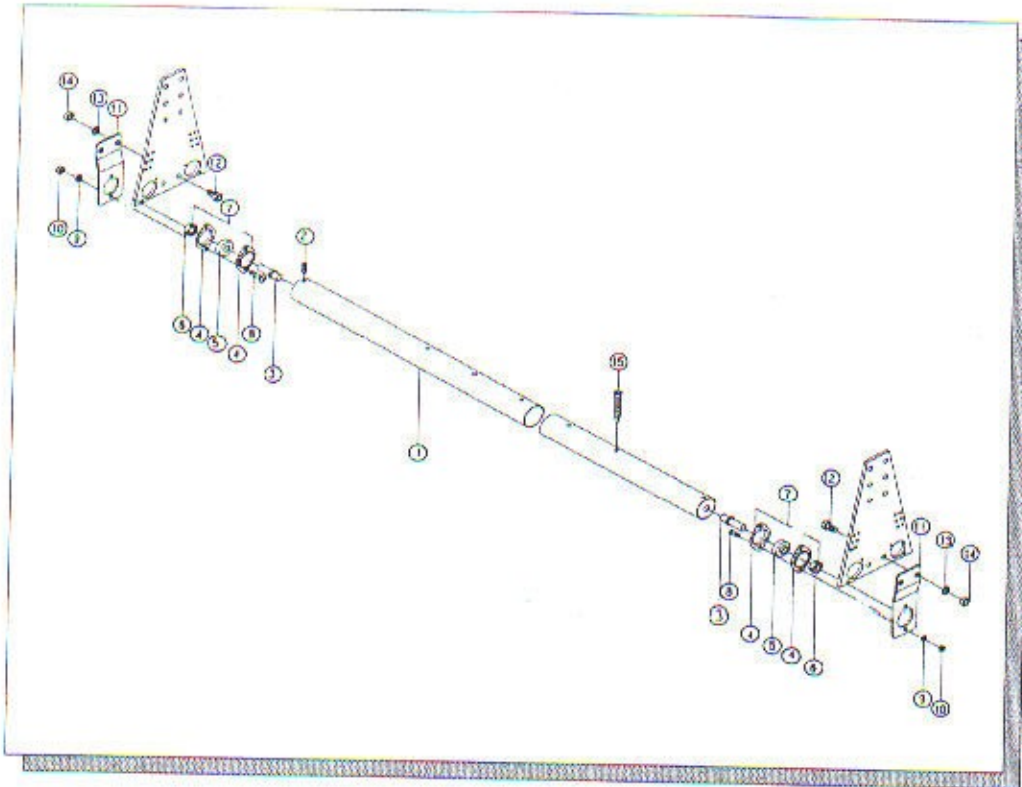
UPPER ROLLER, COMPLETE

Cat No: 690-02-100
Part No: 700-44-3121

Ref. No.	Description	Cat.No.	Part No.	No. Req.
1.	Roller	690-02-101	600-44-3521	2
2.	5/16"x15 Allen Screw NC		251-22-0581	4
3.	Roller Connector	690-02-102	600-44-3522	4
4.	Bearing Plate		252-22-0012	8
5.	Bearing Cup		252-22-0013	4
6.	Bearing Con		252-22-0014	4
7.	Bearing Complete, PFL 203		252-22-0011	4
8.	1/4"x19(3/4") Carriage Bolt NC		251-22-1207	8
9.	1/4" Lockwasher		251-22-0500	8
10.	1/4" Hex Nut NC		251-22-0510	8
11.	Plate	690-02-104	600-44-3524	2
12.	1/2"x25(1") Capscrew NC		251-22-0772	8
13.	1/2" Lockwasher		251-22-0752	8
14.	Tightening Plate	690-02-103	600-44-3523	2

LOWER ROLLER, COMPLETE (Optional)

Cat No: 690-02-200
Part No: 700-44-3122



Ref. No.	Description	Cat.No.	Part No.	No. Req.
1.	Roller	690-02-111	600-44-3528	1
2.	5/16"x15 Allen Screw NC		251-22-0581	4
3.	Roller Connector	690-02-102	600-44-3522	4
4.	Bearing Plate		252-22-0012	8
5.	Bearing Cup		252-22-0013	4
6.	Bearing Con		252-22-0014	4
7.	Bearing Complete, PFL 203		252-22-0011	4
8.	1/4"x19(3/4") Carriage Bolt NC		251-22-1207	8
9.	1/4" Lockwasher		251-22-0500	8
10.	1/4" Hex Nut NC		251-22-0510	8
11.	Plate	690-02-110	600-44-3527	2
12.	1/2"x25(1") Capscrew NC		251-22-0772	4
13.	1/2" Lockwasher		251-22-0752	4
14.	1/2" Hex Nut NC		251-22-0758	4
15.	Cutting Bolt	690-02-112	600-44-3529	1

**COMPACTION WHEEL
SHORT, COMPLETE**

(All Items Except 9A, 19A)

Cat. No: 690-05-100

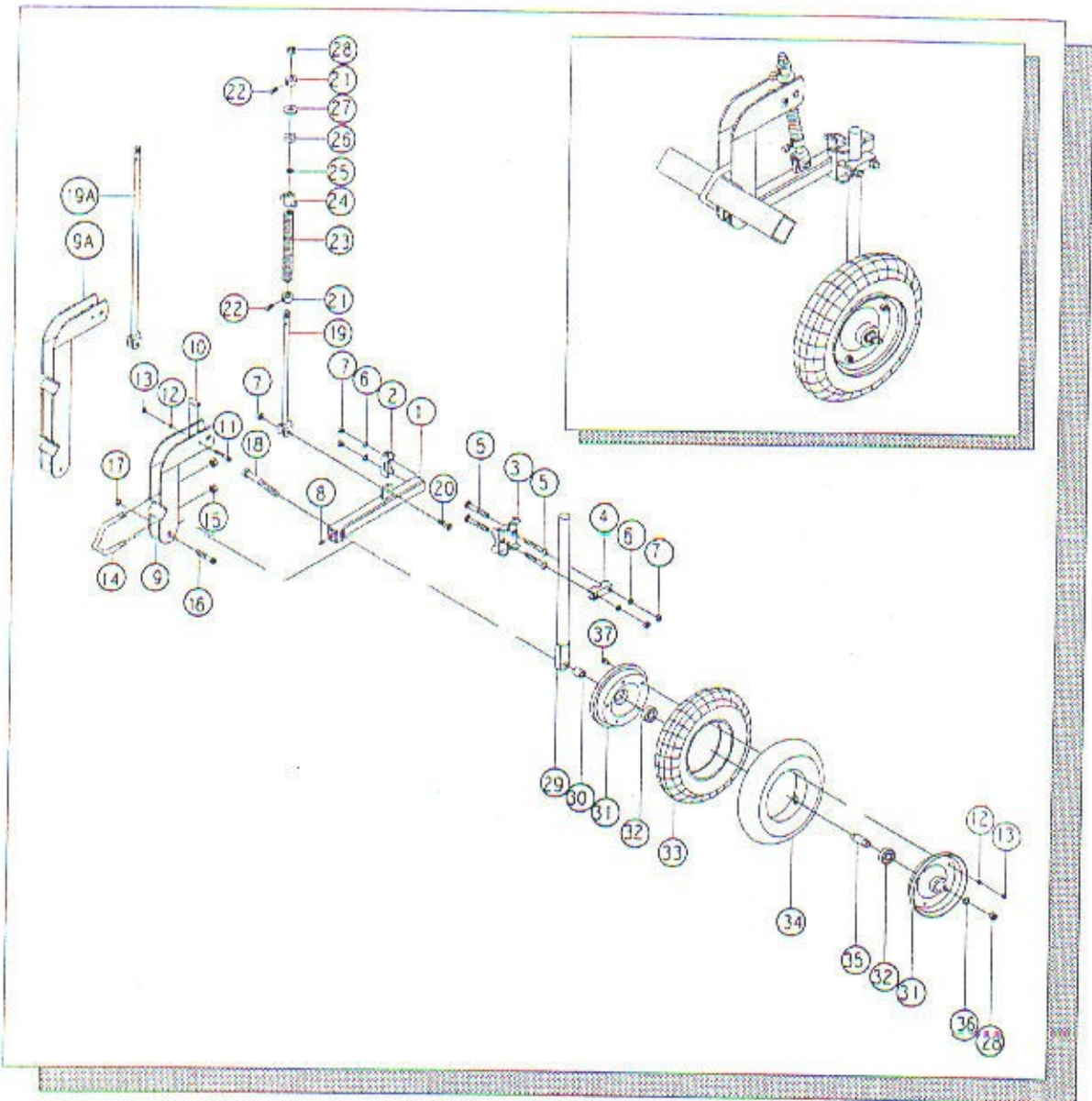
Part No: 700-44-3151

**COMPACTION WHEEL
LONG, COMPLETE**

(All Items Except 9, 19)

Cat. No: 690-05-300

Part No: 700-44-3153



**COMPACTION WHEEL
SHORT, COMPLETE**

(All Items Except 9A, 19A)

Cat. No: 690-05-100

Part No: 700-44-3151

**COMPACTION WHEEL
LONG, COMPLETE**

(All Items Except 9, 19)

Cat. No: 690-05-300

Part No: 700-44-3153

Ref. No.	Description	Cat.No.	Part No.	No. Req.
1.	Bracket Arm	690-07-101	600-44-3571	1
2.	Square Counter, Bracket	690-06-104	600-44-3564	1
3.	Bracket	690-06-103	600-44-3563	1
4.	Round counter, Bracket	690-06-105	600-44-3565	1
5.	1/2"x90(3 1/2") Carriage Bolt NC		251-22-1233	4
6.	1/2" Lockwasher		251-22-0752	6
7.	1/2" Hex Nut NC		251-22-0762	7
8.	1/4" NF Grease Fitting		290-22-0225	1
9.	Bracket, Short	690-03-101	600-44-3531	1
9A.	Bracket, Long	690-04-101	600-44-3541	1
10.	Spacer	690-03-102	600-44-3532	1
11.	3/8"x63(2 1/2") Capscrew NC		251-22-0666	1
12.	3/8" Lockwasher		251-22-0632	6
13.	3/8" Hex Nut NC		251-22-0638	6
14.	"U" Bolt 5/8"	104-03-107	600-34-0588	1
15.	5/8" Nylock Nut NC		251-22-0910	2
16.	1/2"x71(2 3/4") Capscrew NC		251-22-0786	1
17.	1/2" Nylock Nut NC		251-22-0758	1
18.	5/8"x150 (6") Capscrew NC		251-22-0959	1
19.	Tension Rod, Short	020-08-009	500-33-1509	1
19A.	Tension Rod, Long	690-04-102	600-44-3542	1
20.	1/2"x38(1 1/2") Capscrew NC		251-22-0776	1
21.	Adjusting Collar	020-50-065	500-33-1865	2
22.	1/2"x20(3/4") Setscrew NC		251-22-1335	2
23.	Compression Spring	014-50-051	500-33-0512	1
24.	Trunnion	014-00-036	500-33-0345	1
25.	5/8" Flatwasher		251-22-0898	1
26.	Spring Rubber Buffer	020-50-008	500-33-1808	1
27.	5/8" Washer	010-50-018	500-33-0270	1
28.	5/8" Hex Nut NC		251-22-0904	2
29.	Shank	690-05-106	600-44-3556	1
30.	Pressure Wheel Spacer	690-05-104	600-44-3554	1
31.	Rim		261-22-0162	2
32.	Bearing (630-U)		252-22-0104	2
33.	Tire (WP 16/05 G)		252-22-0163	1
34.	Inner Tub (WPT 16 G)		261-22-0164	1
35.	Bearing Spacer	690-05-103	600-44-3553	1
36.	5/8" Lockwasher		251-22-0892	1
37.	3/8"x20(3/4") Capscrew NC		251-22-0654	5

**PLASTIC COVERING SHOVEL
SHORT R.H, COMPLETE**

(All Items Except 30, 9A, 19A)

Cat. No: 690-06-100

Part No: 700-44-3161

**PLASTIC COVERING SHOVEL
SHORT, L.H, COMPLETE**

(All Items Except 29, 9A, 19A)

Cat. No: 690-06-200

Part No: 700-44-3162

**PLASTIC COVERING SHOVEL
LONG, R.H, COMPLETE**

(All Items Except 30, 9, 19)

Cat. No: 690-06-300

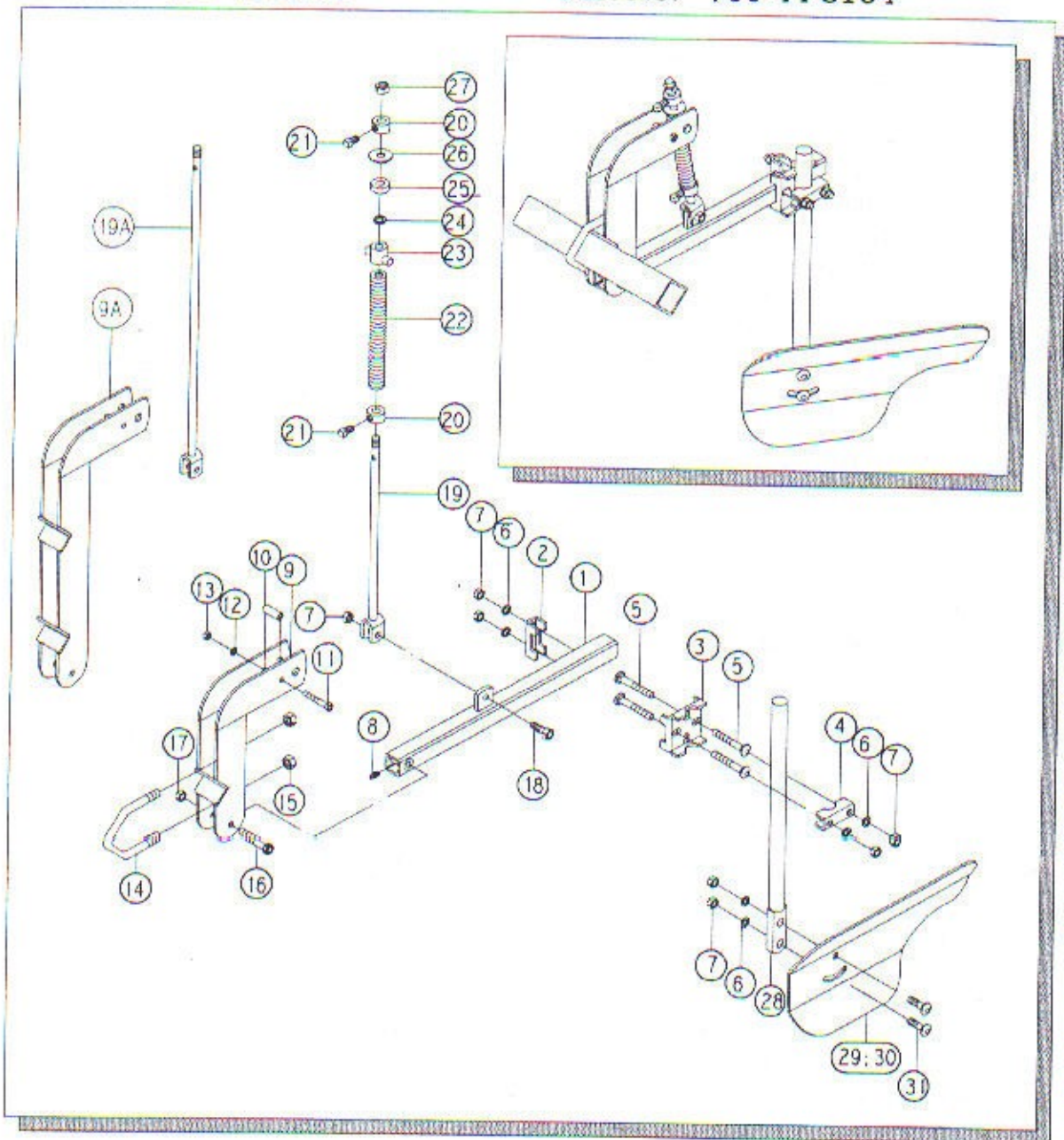
Part No: 700-44-3163

**PLASTIC COVERING SHOVEL
LONG, L.H, COMPLETE**

(All Items Except 29, 9, 19)

Cat. No: 690-06-400

Part No: 700-44-3164



**PLASTIC COVERING SHOVEL
SHORT R.H, COMPLETE**

(All Items Except 30, 9A, 19A)

Cat. No: 690-06-100

Part No: 700-44-3161

**PLASTIC COVERING SHOVEL
SHORT, L.H, COMPLETE**

(All Items Except 29, 9A, 19A)

Cat. No: 690-06-200

Part No: 700-44-3162

**PLASTIC COVERING SHOVEL
LONG, R.H, COMPLETE**

(All Items Except 30, 9, 19)

Cat. No: 690-06-300

Part No: 700-44-3163

**PLASTIC COVERING SHOVEL
LONG, L.H, COMPLETE**

(All Items Except 29, 9, 19)

Cat. No: 690-06-400

Part No: 700-44-3164

Ref. No.	Description	Cat.No.	Part No.	No. Req.
1.	Bracket Arm	690-06-101	600-44-3561	1
2.	Square Counter, Bracket	690-06-104	600-44-3564	1
3.	Bracket	690-06-103	600-44-3563	1
4.	Round Counter, Bracket	690-06-105	600-44-3565	1
5.	1/2"x90(3 1/2") Carriage Bolt NC		251-22-1233	4
6.	1/2" Lockwasher		251-22-0752	6
7.	1/2" Hex Nut NC		251-22-0762	7
8.	1/4" NF Grease Fitting		290-22-0225	1
9.	Bracket, Short	690-03-101	600-44-3531	1
9A.	Bracket, Long	690-04-101	600-44-3541	1
10.	Spacer	690-03-102	600-44-3532	1
11.	3/8"x63(2 1/2") Capscrew NC		251-22-0666	1
12.	3/8" Lockwasher		251-22-0632	1
13.	3/8" Hex Nut NC		251-22-0638	1
14.	"U" Bolt 5/8"	104-03-107	600-34-0588	1
15.	5/8" Nylock Nut NC		251-22-0910	2
16.	1/2"x71(2 3/4") Capscrew NC		251-22-0786	1
17.	1/2" Nylock Nut NC		251-22-0758	1
18.	1/2"x38(1 1/2") Capscrew NC		251-22-0776	1
19.	Tension Rod, Short	020-08-009	500-33-1509	1
19A.	Tension Rod, Long	690-04-102	600-44-3542	1
20.	Adjusting Collar	020-50-065	500-33-1865	2
21.	1/2"x20(3/4") Setscrew NC		251-22-1335	2
22.	Compression Spring	014-50-051	500-33-0512	1
23.	Trunnion	014-00-036	500-33-0345	1
24.	5/8" Flatwasher		251-22-0898	1
25.	Spring Rubber Buffer	020-50-008	500-33-1808	1
26.	5/8" Washer	010-50-018	500-33-0270	1
27.	5/8" Hex Nut NC		251-22-0904	1
28.	Covering Shovel, Shank	690-06-106	600-44-3566	1
29.	Covering Shovel, Right	690-06-107	600-44-3567	1
30.	Covering Shovel, Left	690-06-108	600-44-3568	1
31.	1/2"x38(1 1/2") Carriage Bolt NC		251-22-1227	2

**DISC BRACKET
SHORT, COMPLETE**

(All Items Except 9A, 19A)

Cat. No: 690-07-100

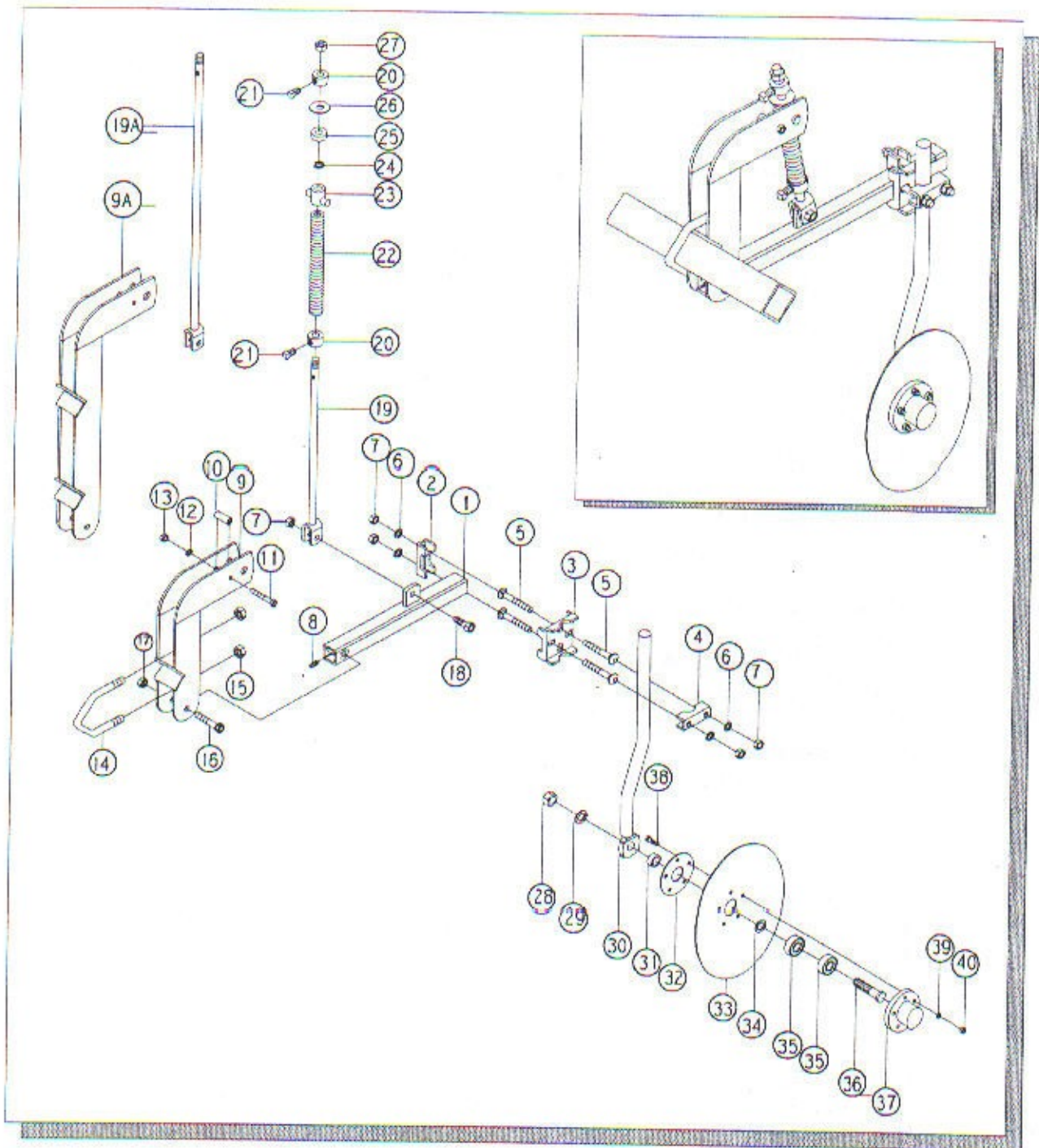
Part No: 700-44-3171

**DISC BRACKET
LONG, COMPLETE**

(All Items Except 9, 19)

Cat. No: 690-07-200

Part No: 700-44-3172



**DISC BRACKET
SHORT, COMPLETE**

(All Items Except 9A, 19A)

Cat. No: 690-07-100

Part No: 700-44-3171

**DISC BRACKET
LONG, COMPLETE**

(All Items Except 9, 19)

Cat. No: 690-07-200

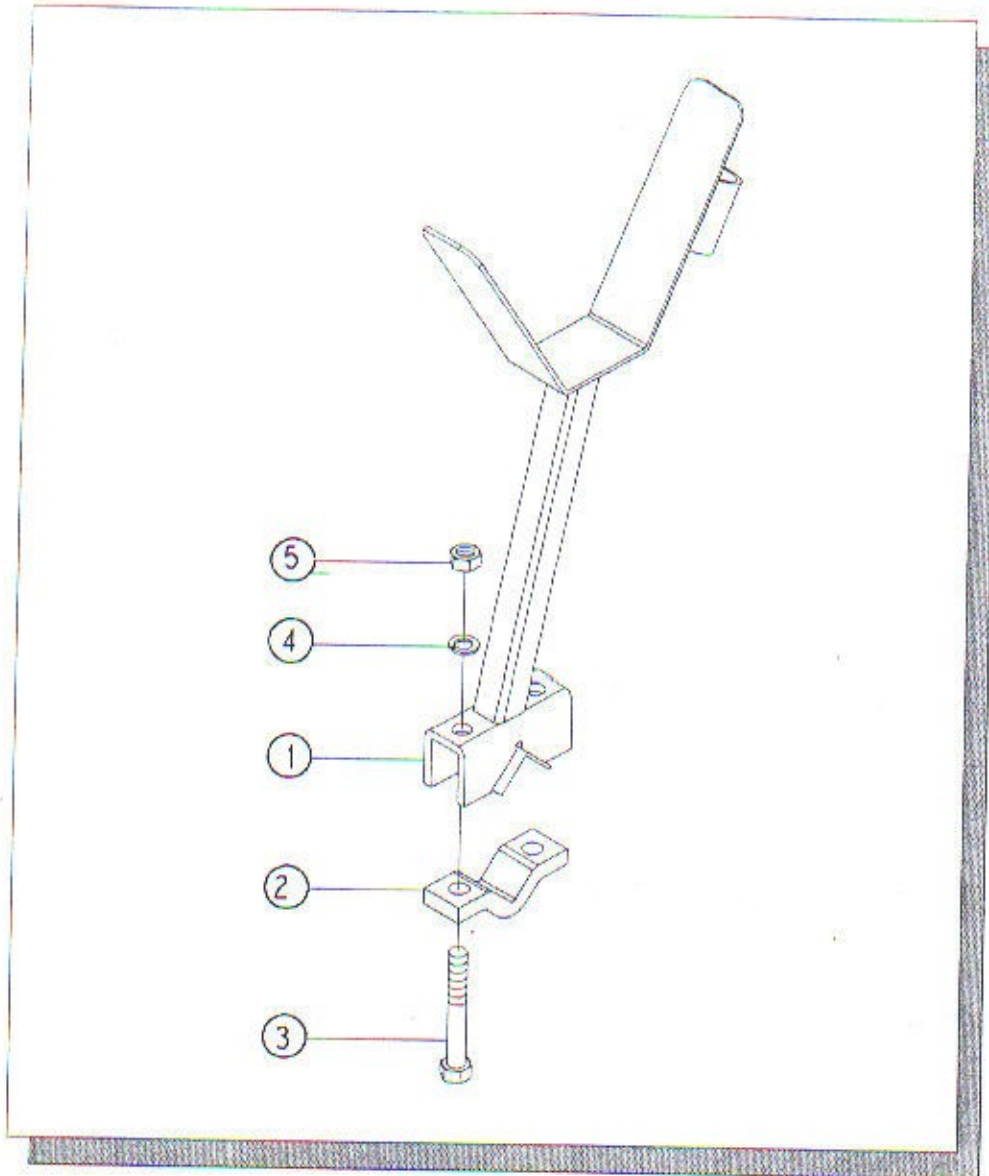
Part No: 700-44-3172

Ref. No.	Description	Cat.No.	Part No.	No. Req.
1.	Bracket Arm	690-07-101	600-44-3571	1
2.	Square Counter, Bracket	690-06-104	600-44-3564	1
3.	Bracket	690-06-103	600-44-3563	1
4.	Round Counter, Bracket	690-06-105	600-44-3565	1
5.	1/2"x90(3 1/2") Carriage Bolt NC		251-22-1233	4
6.	1/2" Lockwasher		251-22-0752	4
7.	1/2" Hex Nut NC		251-22-0762	5
8.	1/4" NF Grease Fitting		290-22-0225	1
9.	Bracket, Short	690-03-101	600-44-3531	1
9A.	Bracket, Long	690-04-101	600-44-3541	1
10.	Spacer	690-03-102	600-44-3532	1
11.	3/8"x63(2 1/2") Capscrew NC		251-22-0666	1
12.	3/8" Lockwasher		251-22-0632	1
13.	3/8" Hex Nut NC		251-22-0638	1
14.	"U" Bolt 5/8"	104-03-107	600-34-0588	1
15.	5/8" Nylock Nut NC		251-22-0910	2
16.	1/2"x71(2 3/4") Capscrew NC		251-22-0786	1
17.	1/2" Nylock Nut NC		251-22-0758	1
18.	1/2"x38(1 1/2") Capscrew NC		251-22-0776	1
19.	Tension Rod, Short	020-08-009	500-33-1509	1
19A.	Tension Rod, Long	690-04-102	600-44-3542	1
20.	Adjusting Collar	020-50-065	500-33-1865	2
21.	1/2"x20(3/4") Setscrew NC		251-22-1335	2
22.	Compression Spring	014-50-051	500-33-0512	1
23.	Trunnion	014-00-036	500-33-0345	1
24.	5/8" Flatwasher		251-22-0898	1
25.	Spring Rubber Buffer	020-50-008	500-33-1808	1
26.	5/8" Washer	010-50-018	500-33-0270	1
27.	5/8" Hex Nut NC		251-22-0904	1
28.	3/4" Lock Nut		251-22-0992	1
29.	3/4" Lock Washer		251-22-0982	1
30.	Disc Shank	130-24-101	600-34-1255	1
31.	Spacer	020-04-100	500-33-1238	1
32.	Disc Plate	020-07-053	500-33-1390	1
33.	Disc	020-50-128	500-33-1928	1
34.	"O" Ring	015-61-108	500-33-0706	1
35.	Ball Bearing	020-50-094	500-33-1894	2
36.	Disc Axle	020-50-127	500-33-1927	1
37.	Disc Hub	020-00-051	500-33-0951	1
38.	5/16"x7/8" Capscrew NC		251-22-0589	5
39.	5/16" Lockwasher		251-22-0564	5
40.	5/16" Hex Nut NC		251-22-0570	5

SPARE ROLLER MOUNT COMPLETE

Cat. No.: 690-09-100

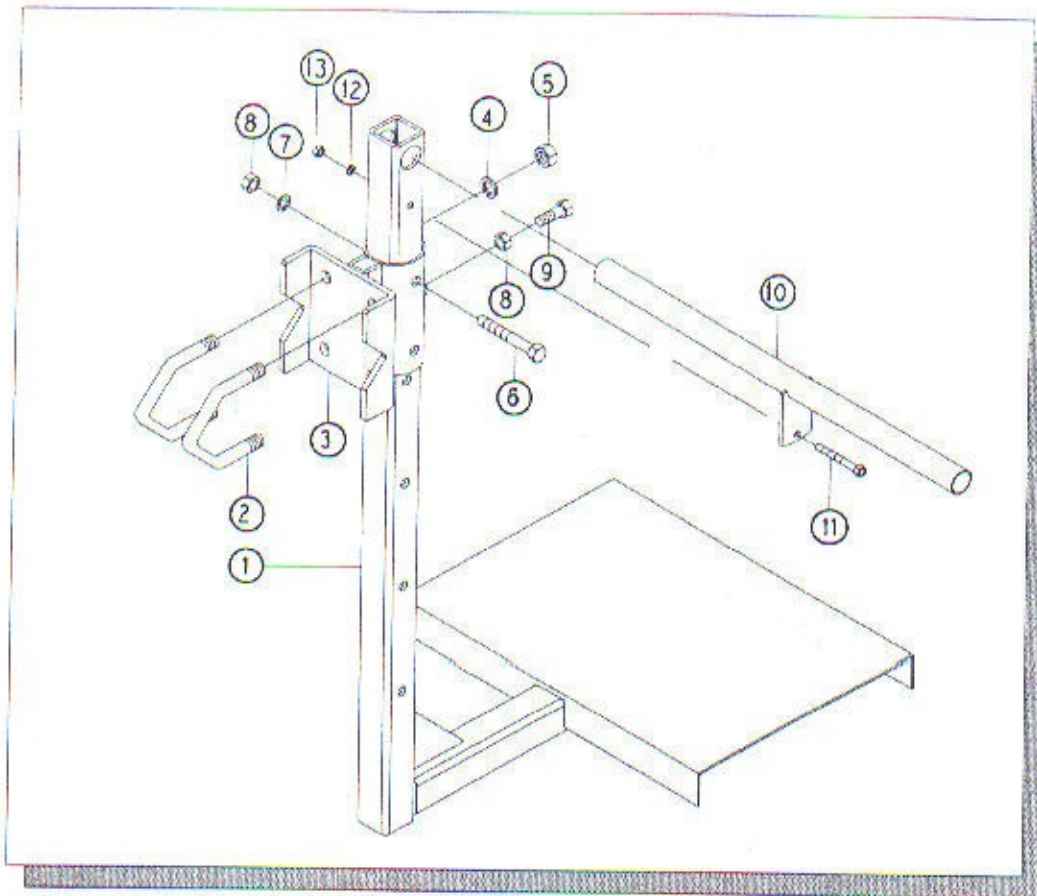
Part No.: 700-44-3191



Ref. No.	Description	Cat.No.	Part No.	No. Req.
1.	Spare Roller Mount Complete	680-09-101	600-44-3091	1
2.	Counter Plate	020-03-066	600-34-0851	1
3.	3/4"x138(5 1/2") Capscrew NC		251-22-1032	2
4.	3/4" Lockwasher		251-22-0982	2
5.	3/4" Hex Nut NC		251-22-0990	2

REAR STAND

Cat No: 690-08-100
Part No: 700-44-3181

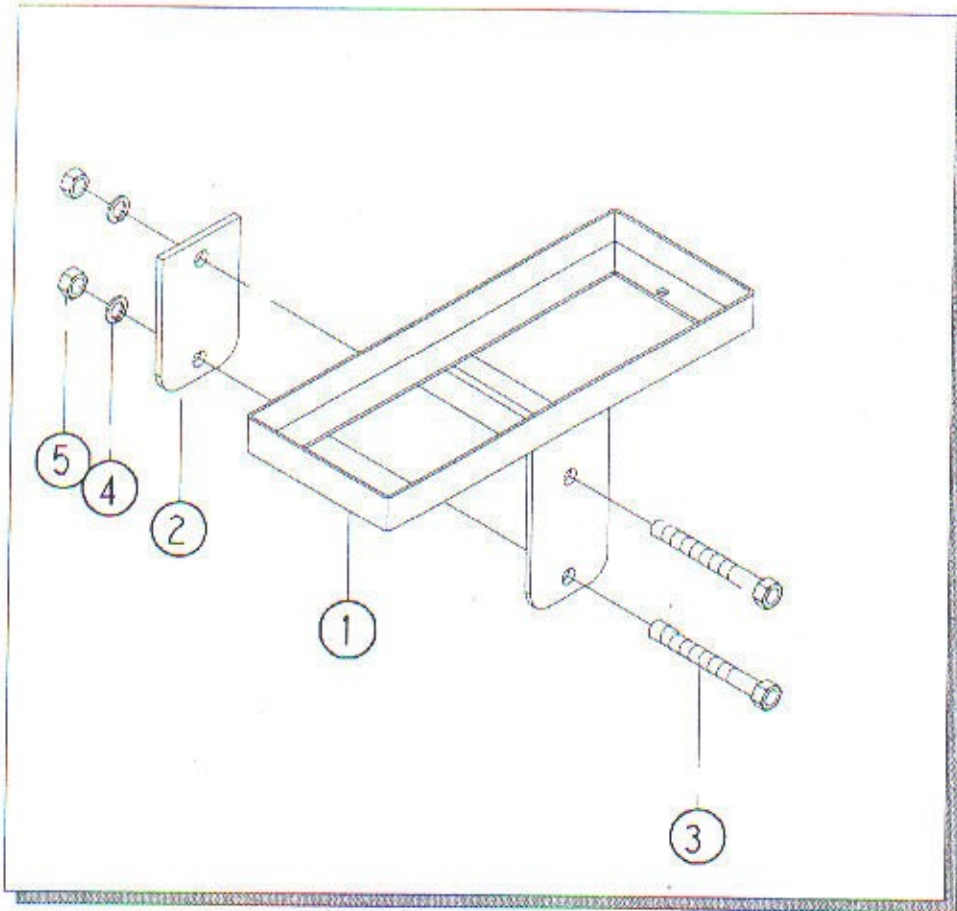


Ref. No.	Description	Cat.No.	Part No.	No. Req.
1.	Rear Stand	690-08-101	600-44-3581	1
2.	"U" Bolt 5/8"	104-03-107	600-34-0588	2
3.	Clamp	690-08-102	600-44-3582	1
4.	5/8" Hex Nut NC		251-22-0904	4
5.	5/8" Lockwasher		251-22-0892	4
6.	1/2"x90(3 1/2") Capscrew NC		251-22-0794	1
7.	1/2" Lockwasher		251-22-0752	1
8.	1/2" Hex Nut NC		251-22-0758	2
9.	1/2"x38(1 1/2") Capscrew NC		251-22-0776	1
10.	Stand Handle	690-08-103	600-44-3583	1
11.	5/16"x63(2 1/2") Capscrew NC		251-22-0600	1
12.	5/16" Lockwasher		251-22-0568	1
13.	5/16" Hex Nut NC		251-22-0570	1

TOOL BOX CARRIER, COMPLETE

Cat. No.: 690-10-100

Part No.: 700-44-3192



Ref. No.	Description	Cat.No.	Part No.	No. Req.
1.	Tool Box Carrier	690-10-101	600-44-3601	1
2.	Counter Plate	690-10-102	600-44-3602	1
3.	1/2"x112(4 1/2") Capscrew NC		251-22-0798	2
4.	1/2" Lockwasher		251-22-0752	2
5.	1/2" Hex Nut NC		251-22-0758	2

GAUGE WHEEL

BRACKET FOR 2 1/2"x2 1/2" TOOL BAR

(Includes Items 1-8)

Cat No: 020-20-046

Part No: 700-34-0820

GAUGE WHEEL, SHORT R.H.

(Includes Items 9, 11-23)

Cat. No: 020-20-014

Part No: 700-34-0809

GAUGE WHEEL, SHORT, L.H.

(Includes Items 10, 11-23)

Cat. No: 020-20-015

Part No: 700-34-0811

GAUGE WHEEL, LONG R.H.

(Includes Items 9A, 11-23)

Cat. No: 690-11-100

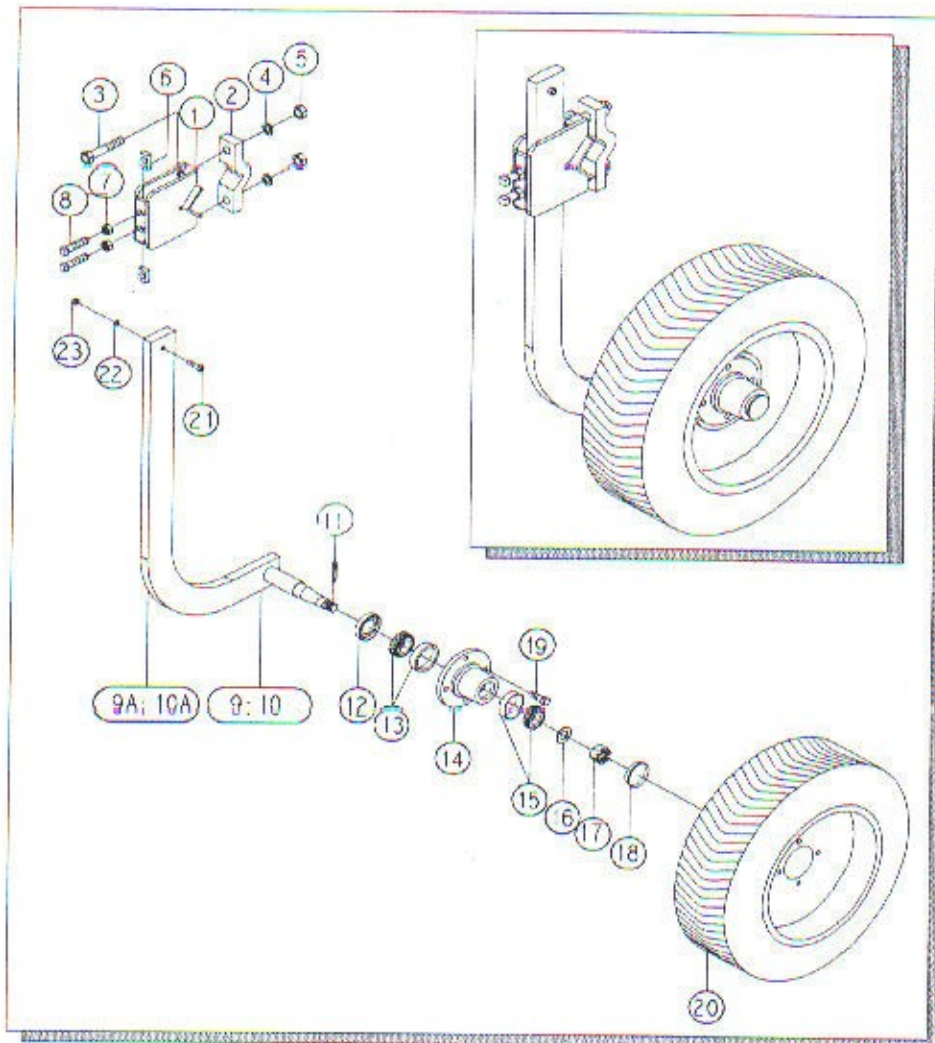
Part No: 700-44-3195

GAUGE WHEEL, LONG, L.H.

(Includes Items 10A, 11-23)

Cat. No: 690-11-200

Part No: 700-44-3196



BRACKET FOR 2 1/2"x2 1/2" TOOL BAR

(Includes Items 1-8)

Cat No: 020-20-046

Part No: 700-34-0820

Ref. No.	Description	Cat.No.	Part No.	No. Req.
1.	Shank Clamp	020-03-087	600-34-0903	1
2.	Clamp	020-03-067	600-34-0852	1
3.	3/4"x100(4") Capscrew NC		251-22-1022	2
4.	3/4" Lockwasher		251-22-0984	2
5.	3/4" Hex Nut NC		251-22-0990	2
6.	5/8" Rectangular Nut		251-22-0912	2
7.	5/8" Hex Nut NC		251-22-0904	2
8.	5/8"x63(2 1/2") Setscrew NC		251-22-1315	2

GAUGE WHEEL, SHORT R.H.

(Includes Items 9, 11-23)

Cat. No: 020-20-014

Part No: 700-34-0809

GAUGE WHEEL, SHORT, L.H.

(Includes Items 10, 11-23)

Cat. No: 020-20-015

Part No: 700-34-0811

GAUGE WHEEL, LONG R.H.

(Includes Items 9A, 11-23)

Cat. No: 690-11-100

Part No: 700-44-3195

GAUGE WHEEL, LONG, L.H.

(Includes Items 10A, 11-23)

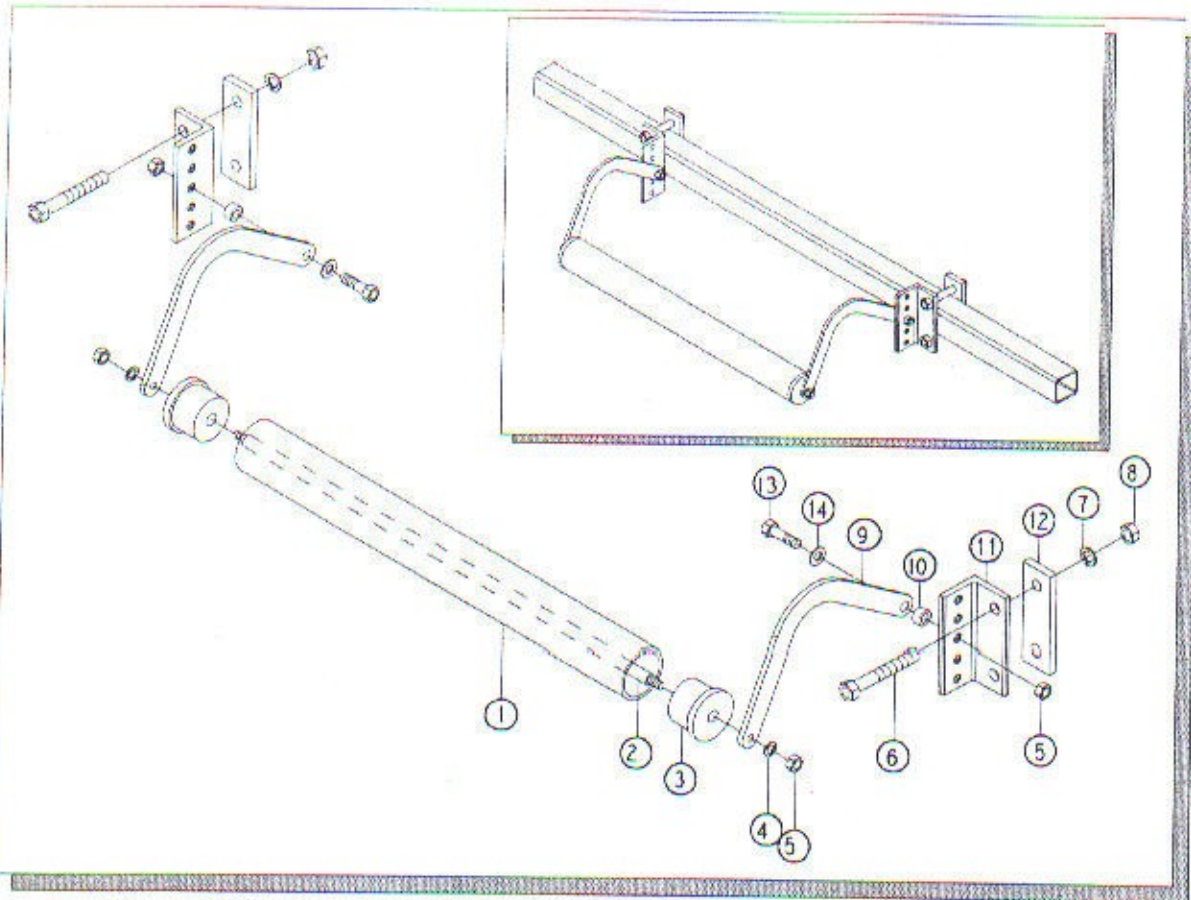
Cat. No: 690-11-200

Part No: 700-44-3196

Ref. No.	Description	Cat.No.	Part No.	No. Req.
9.	Gauge Wheel Arm, Short, R.H.	020-08-027	600-34-0885	1
9A.	Gauge Wheel Arm, Long, R.H.	690-11-101	600-44-3611	1
10.	Gauge Wheel Arm, Short, L.H.	020-08-026	600-34-0884	1
10A.	Gauge Wheel Arm, Long, L.H.	690-11-102	600-44-3612	1
11.	5/32"x25(1") Cotter Pin		290-22-0315	1
12.	Wheel Grease Seal	001-50-140	500-33-0150	1
13.	Inner Wheel Bearing	020-50-141	500-33-1941	1
14.	Wheel Hub	001-50-117	500-33-0117	1
15.	Outer Wheel Bearing	020-50-140	500-33-1940	1
16.	Wheel Washer	001-50-068	500-33-0068	1
17.	3/4" Slotted Nut NF		251-22-1708	1
18.	Hub Cup	001-50-069	500-33-0069	1
19.	Wheel Bolt	001-50-070	500-33-0070	4
20.	Wheel 145x10		261-22-0161	1
21.	3/8"x38(1 1/2") Capscrew NC		251-22-0660	1
22.	3/8" Lockwasher		251-22-0632	1
23.	3/8" Hex Nut NC		251-22-0638	1

COUNTER WEIGHT FOR PLASTIC ROLLER

Cat No: 690-12-100
Part No: 700-44-3199



Ref. No.	Description	Cat.No.	Part No.	No. Req.
1.	Roller	690-12-104	600-44-3624	1
2.	Axle	690-12-103	600-44-3623	1
3.	Bushing (Okolon)	690-12-105	600-44-3625	2
4.	1/2" Lockwasher		251-22-0752	2
5.	1/2" Hex Nut NC		251-22-0758	4
6.	3/4"x112(4 1/2") Capscrew NC		251-22-1024	4
7.	3/4" Lockwasher		251-22-0982	4
8.	3/4" Hex Nut NC		251-22-0990	4
9.	Arm	690-12-101	600-44-3621	2
10.	Bushing	020-04-039	500-33-1208	2
11.	Angle	690-12-102	600-44-3622	2
12.	Counter Plate	690-12-106	600-44-3626	2
13.	1/2"x45(1 3/4") Capscrew NC		251-22-0778	2
14.	1/2" Flatwasher		251-22-0756	2